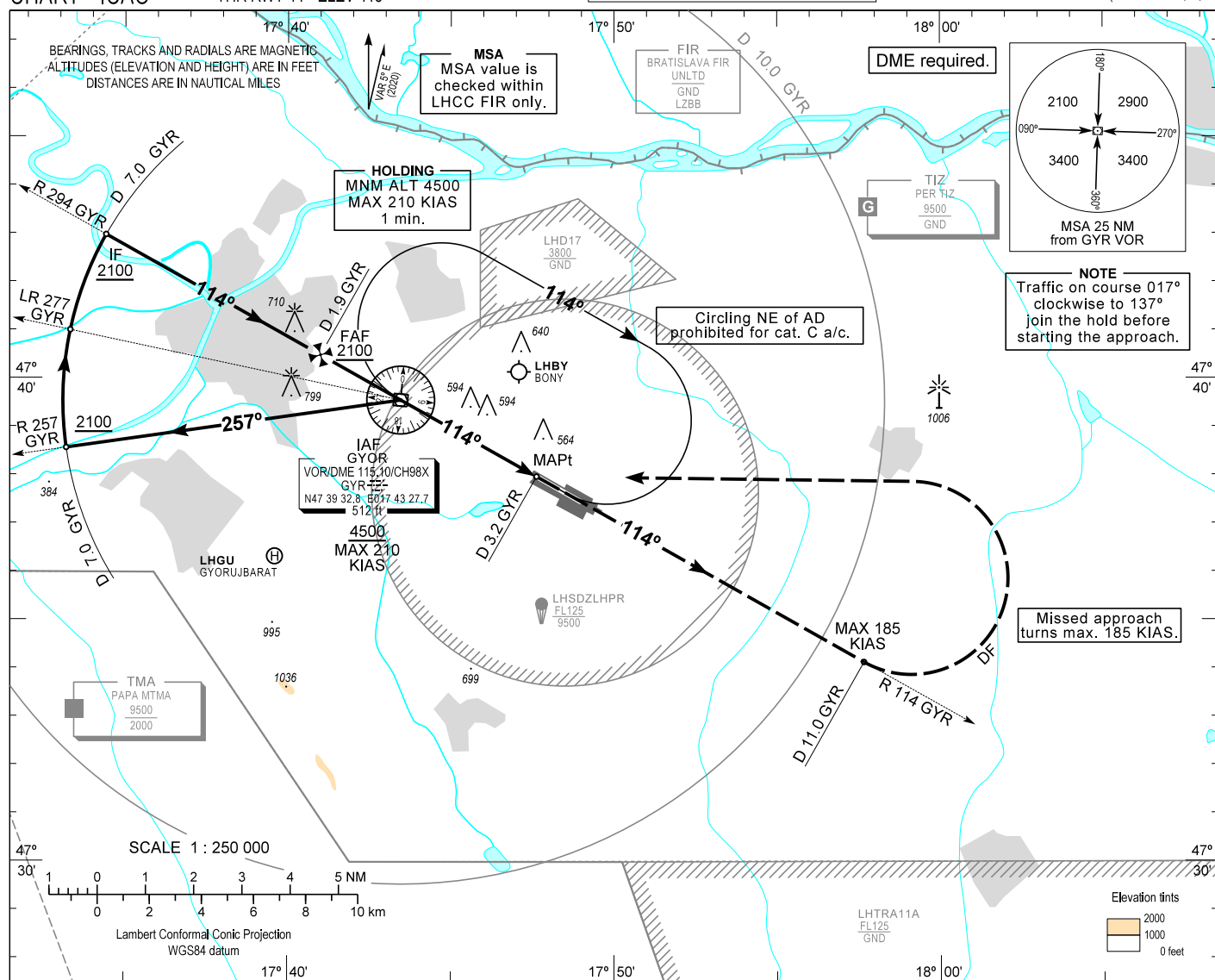


AIP HUNGARY

INSTRUMENT
APPROACH
CHART - ICAOAERODROME ELEV 426
HEIGHTS RELATED TO
THR RWY 11 - ELEV 415PÉR INFORMATION 129.910
BUDAPEST INFORMATION (WEST) 125.500GYÖR/PÉR
VOR RWY 11
(ACFT CAT A, B, C)TRANSITION ALTITUDE
10000

MISSED APPROACH

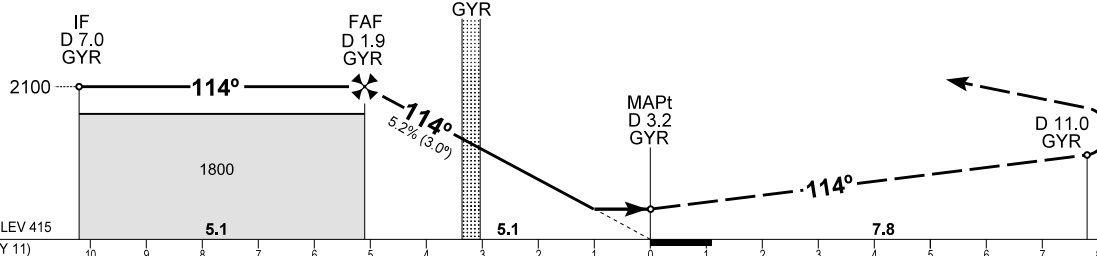
Climb 4500.

Proceed initially on R 114 GYR.

When passing D 11.0 GYR on R 114 GYR turn left direct to GYR VOR.

Maximum turning speed 185 KIAS.

At GYR VOR enter published holding pattern at or above 4500.



CHANGE: Intermediate OCA

OCA (OCH)		A	B	C	CDFA with GYR DME		NM	1.0 Inbound	0.0	1.0 outbound	2.0 outbound
STRAIGHT-IN APPROACH		840 (430)			ALT	ft	1800	1480	1170	850	
CIRCLING APPROACH	ft AMSL	890	940	1180 SW of AD only	Timing not authorized to define the MAPt.						
	VIS. m	1900	2800	3700	GROUND SPEED	kt	60	90	120	150	
		FAF - MAPt 5.1 NM				min:sec	5:06	3:24	2:33	2:03	
		Rate of descent (319 ft/NM)				ft/min	320	480	640	800	

AD 2 LHPR INSTRUMENT APPROACH CHART VOR RWY 11

Initial altitude at or above 4500.
Leave GYR VOR on R 257 GYR and descend 2100.
At D 7.0 GYR turn right and join CW D 7.0 GYR DME arc.
After crossing R 277 GYR leading radial turn right and intercept R 294 GYR inbound for final RWY11.
When crossing D 1.9 GYR (FAF) descend to published minimum altitude.

Holding procedure:

Holding fix: GYR VOR

Right hand holding pattern.

Maximum speed: 210 KIAS

Inbound track: 294°

Outbound track: 114°

Rate of turn: 3°/sec. or 25° bank angle
(whichever requires lesser bank)

Outbound timing: 1 min.

Minimum holding altitude: 4500

Maximum holding altitude: 8500